



How do I sell a stock or ETF?

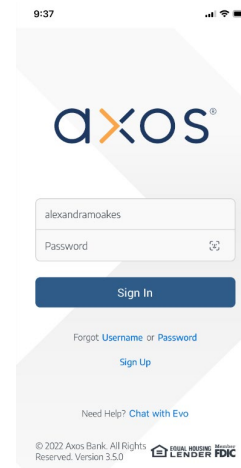
How to Sell a stock or ETF with Axos Invest - Mobile

*Indicates feature(s) available with Axos Elite Subscription: Axos Elite boosts your investment capabilities. Membership provides an advanced variety of investment instruments and enhanced personalization.

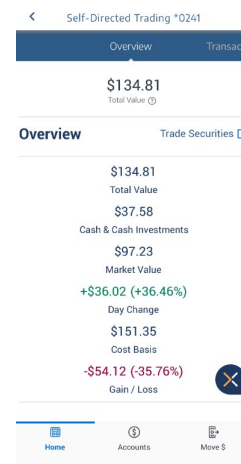
- › Real-time market data and premium TipRanks™ research
- › Extended trading hours
- › Margin trading
- › Discounted rates and fees

[Learn more about Axos Elite and how to enroll here](#)

1. **Log into** your Axos Bank account on your mobile app and navigate to your **Self-Directed Trading Account** within the My Dashboard **Account Overview** tile



2. Tap the **Trade Securities** link in the Self-Directed Trading Account Overview Tab



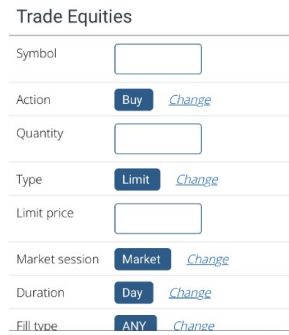


How to Sell a stock or ETF with Axos Invest - Mobile

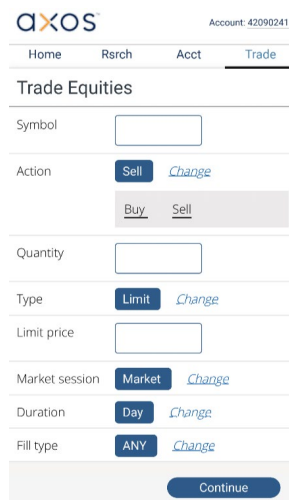
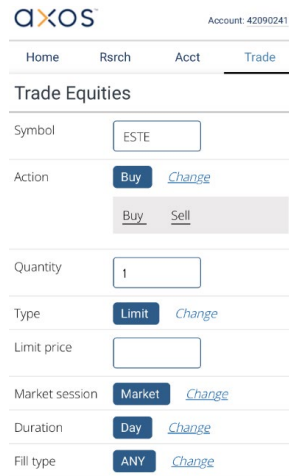
3. Tap **Trade** and **Equities** in the top menu



4. Input the stock or ETF **Symbol** you wish to sell in your portfolio



5. Tap **Change** and select **Sell** from the **Action** drop-down menu





6. Enter the number of shares you want to sell

Home Rsrch Acct **Trade**

Symbol

Action **Buy** [Change](#)

Buy **Sell**

Quantity

Type **Market** [Change](#)

[Limit](#) [Market](#) [Stop](#)

[Stop Limit](#)

Market session **Market** [Change](#)

[Pre-market \(4am - 9:30am EST\)](#)

[Market](#) [Post-market](#)

Duration **Day** [Change](#)

Fill type **ANY** [Change](#)

7. Tap **Change** and select the order **Type** you would like to place if you do not want to use the default selection and fill out the related fields specific to your selected order type

Order Types:

Limit: A Limit order buys a stock at (or below) a specific price you target, or sells a stock at (or above) a price you target—and it only executes if you get your price or better.

Market: A Market order will be executed immediately at the best price currently available on the market

Stop: A Stop order sells a security if its price falls below a specified point and is used to limit (i.e., "stop") losses or lock in profits.

Stop Limit: A Stop Limit order will be executed at a specified price, or better after a given stop price has been reached.

Home Rsrch Acct **Trade**

Symbol

Action **Buy** [Change](#)

Buy **Sell**

Quantity

Type **Market** [Change](#)

[Limit](#) [Market](#) [Stop](#)

[Stop Limit](#)

Market session **Market** [Change](#)

[Pre-market \(4am - 9:30am EST\)](#)

[Market](#) [Post-market](#)

Duration **Day** [Change](#)

Fill type **ANY** [Change](#)



8. Tap Change and select your desired Market Session* if you do not want to use the default selection

*Market Session selection is an Axos Elite subscription feature

Available Market Sessions:
 Pre-Market: 4:00am to 9:25am ET
 Market: 9:30am to 4:00pm ET
 Post-Market: 4:01PM to 7:00pm

9. Tap Change and select your desired order Duration if you do not want to use the default selection

Duration:
 Day: An order will remain in effect for one day, or until it is fully executed or canceled.
 GTC: An order will remain in effect indefinitely, or until it is fully executed or canceled.

10. Tap **Change** and select your desired **Fill Type** if you do not want to use the default selection

Fill Types:
 ANY: Any orders may partially buy or partially sell available shares specified in a single transaction. There may be remaining shares on the order until it is fully executed or canceled.
 AON: All-or-None orders must buy or sell the full quantity of shares specified in a single transaction, or it won't execute at all.



11. Tap **Continue** to review your order

Home Rsrch Acct Trade

Stop Limit

Market session **Market** [Change](#)

Pre-market (4am - 9:30am EST)

Market [Post-market](#)

Duration **Day** [Change](#)

Day [GTC](#)

Fill type **ANY** [Change](#)

ANY [AON](#)

Continue

12. Review your order preview and confirm that all the details are correct. If you would like to edit your order, click **< Cancel**

axos Account: 42090241

Home Rsrch Acct Trade

Trade Equities

Order preview

Account number	42090241
Action	Sell
Symbol	NPCE
Quantity	1
Type	Market
Expected price	2.80
Duration	Day
Fill type	ANY

Cancel < **Confirm >**

13. Tap **Confirm >** to submit your order

axos Account: 42090241

Home Rsrch Acct Trade

Trade Equities

Order preview

Account number	42090241
Action	Sell
Symbol	NPCE
Quantity	1
Type	Market
Expected price	2.80
Duration	Day
Fill type	ANY

Cancel < **Confirm >**

14. The trade is now complete, and you will see your order confirmation

axos Account: 42090241

Home Rsrch Acct Trade

Trade Equities

Your order has been successfully submitted.

Order No AX10225712

Status Waiting to be sent

[Today's orders](#) [Open orders](#)



How to Buy a stock or ETF with Axos Invest - Mobile

© 2022 Axos Financial, Inc., All Rights Reserved. © 2022 Axos Bank, All Rights Reserved. © 2022 Axos Invest LLC. Member FINRA & SIPC. All Rights Reserved. © 2022 Axos Invest, Inc. All Rights Reserved.

Securities and other non-deposit investment products and services are not deposits, obligations of or guaranteed by Axos Bank, are not insured by the FDIC or any governmental agency, and are subject to investment risk including possible loss of the principal invested. Past performance of a security does not guarantee future results or success.

All investments involve risks, including the loss of principal invested. Past performance of a security does not guarantee future results or success.

Axos Invest LLC and its affiliates do not provide tax, legal or accounting advice. This material has been prepared for informational purposes only, and is not intended to provide, and should not be relied on for, tax, legal or accounting advice. You should consult your own tax, legal and accounting advisors before engaging in any transaction.

A mutual fund is not FDIC-insured, may lose value, and is not guaranteed by a bank or other financial institution.

Performance quoted represents past performance, is no guarantee of future results, and may not provide an adequate basis for evaluating the performance of the product over varying market conditions or economic cycles. Current performance may be lower or higher than the performance data quoted. The investment return and principal value of an investment will fluctuate so that an investor's shares, when redeemed, may be worth more or less than their original cost.

No-transaction-fee funds and other funds offered through Axos Invest have other fees and expenses that apply to a continued investment in the fund and are described in the prospectus.

Mutual funds, closed-end funds and exchange-traded funds are subject to market, exchange rate, political, credit, interest rate, and prepayment risks, which vary depending on the type of fund. International investments involve special risks, including currency fluctuations and political and economic instability. Asset allocation and diversification do not eliminate the risk of experiencing investment losses. Fund purchases may be subject to investment minimums, eligibility and other restrictions, as well as charges and expenses.

Research and planning tools are obtained by unaffiliated third-party sources deemed reliable by Axos Invest. However, Axos Invest does not guarantee their accuracy and completeness and makes no warranties with respect to results to be obtained from their use. The reports are for informational purposes only.

ETFs are subject to risk similar to those of their underlying securities, including, but not limited to, market, investment, sector, or industry risks, and those regarding short-selling and margin account maintenance. Some ETFs may involve international risk, currency risk, commodity risk, leverage risk, credit risk, and interest rate risk. Performance may be affected by risks associated with non-diversification, including investments in specific countries or sectors.

Additional risks may also include, but are not limited to, investments in foreign securities, especially emerging markets, real estate investment trusts (REITs), fixed income, small-capitalization securities, and commodities. Each individual investor should consider these risks carefully before investing in a particular security or strategy. Investment returns will fluctuate and are subject to market volatility, so that an investor's shares, when redeemed or sold, may be worth more or less than their original cost. Unlike mutual funds, shares of ETFs are not individually redeemable directly with the ETF. Shares are bought and sold at market price, which may be higher or lower than the net asset value (NAV).

Before you invest in an ETF or send money, you should read the prospectus of the ETF carefully and consider the investment objectives, risks, charges, and expenses for the ETF. You can receive a prospectus for each ETF by sending a secure message on our online platform.

Particular ETFs may not be appropriate investments for all investors, and there may be other ETFs or investment options available through Axos Invest LLC that are more suitable.